

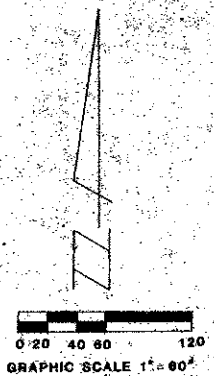
48-48

A PART OF LAKES OF LANTANA P.U.D. LAKES OF SHERBROOKE PHASE 3

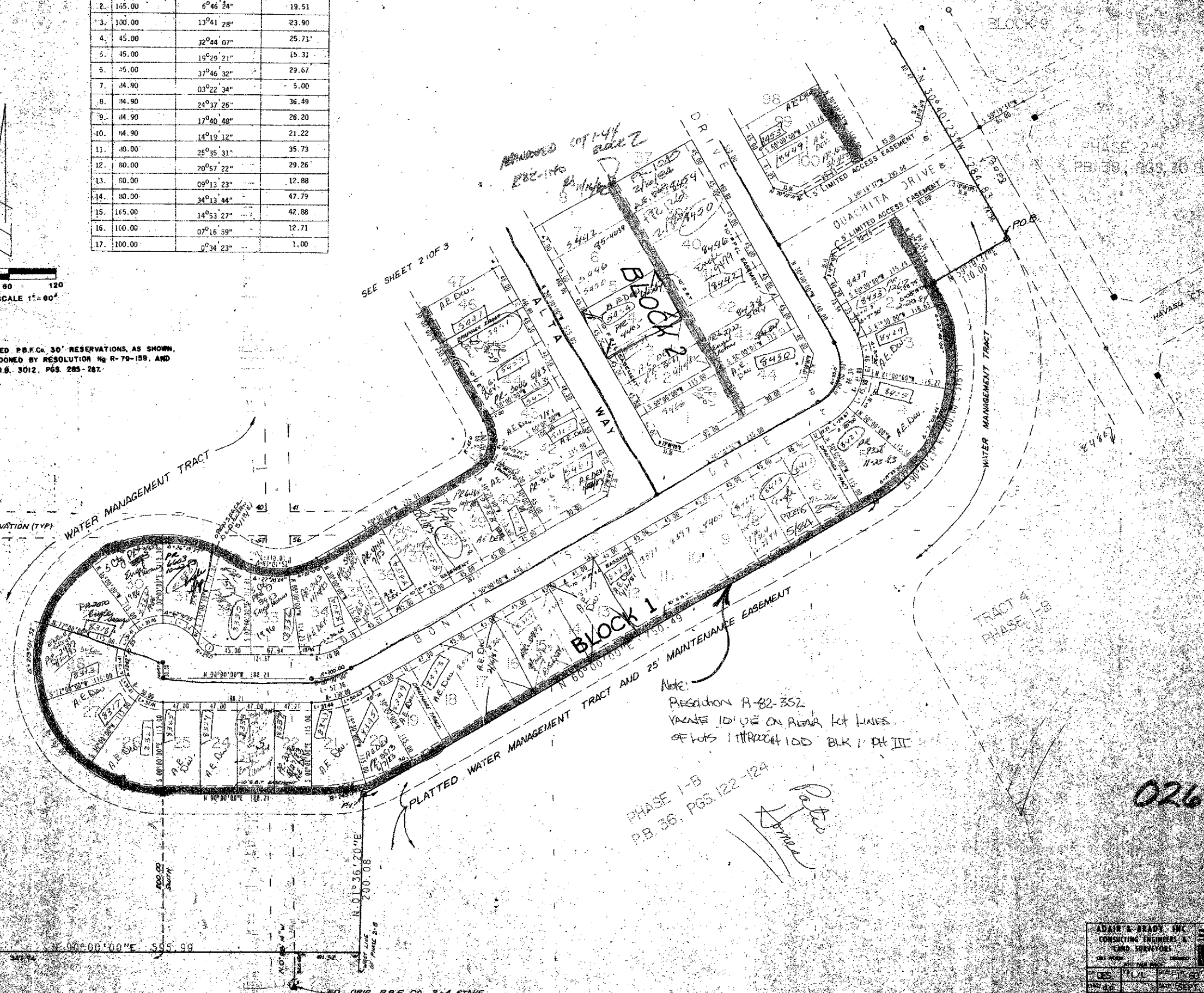
48

CURVE TABLE

| CURVE NO. | RADIUS | Δ | L.A. |
|-----------|--------|-----------|-------|
| 1. | 25.00 | 62°10'55" | 27.13 |
| 2. | 105.00 | 6°46'24" | 19.51 |
| 3. | 100.00 | 13°41'28" | 23.90 |
| 4. | 45.00 | 32°44'07" | 25.71 |
| 5. | 45.00 | 19°29'21" | 15.31 |
| 6. | 45.00 | 37°46'32" | 29.67 |
| 7. | 04.90 | 03°22'34" | 5.00 |
| 8. | 04.90 | 24°37'25" | 36.49 |
| 9. | 04.90 | 17°40'48" | 26.20 |
| 10. | 04.90 | 14°19'12" | 21.22 |
| 11. | 80.00 | 25°35'31" | 35.73 |
| 12. | 80.00 | 20°57'22" | 29.26 |
| 13. | 80.00 | 09°13'23" | 12.88 |
| 14. | 80.00 | 34°13'44" | 47.79 |
| 15. | 165.00 | 14°53'27" | 42.88 |
| 16. | 100.00 | 07°16'59" | 12.71 |
| 17. | 100.00 | 0°34'23" | 1.00 |



NOTE:
THE PLATTED P.B.F.C. 30' RESERVATIONS, AS SHOWN,
WERE ABANDONED BY RESOLUTION No R-79-159, AND
FILED IN O.R.B. 3012, PGS. 285-287.



PALM BEACH FARMS CO. PLAT NO. 3
BLOCK 53
P.B. 2, PGS. 45-54

Note:
Resolution B-82-352
VACATE 10' U.E. ON REAR LOT LINES
OF LOTS 1 THROUGH 100 BLK 1 PH III

PHASE 1-B
P.B. 36, PGS. 122-124
Ret
James

0268-000

41/48

| | | | |
|---|-----------------|---|------------|
| ADAIR & BRADY, INC. CONSULTING ENGINEERS & LAND SURVEYORS | | LAKES OF SHERBROOKE PHASE 3 RECORD PLAT | |
| DATE: 11/11/80 | SCALE: 1" = 60' | FILE: FP 1055 | SHEET: 3 3 |
| DATE: 11/11/80 | SCALE: 1" = 60' | FILE: FP 1055 | SHEET: 3 3 |